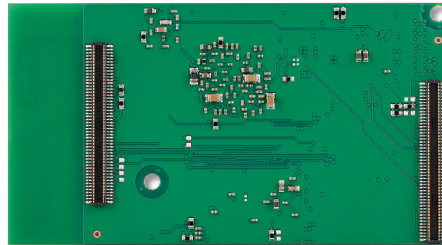
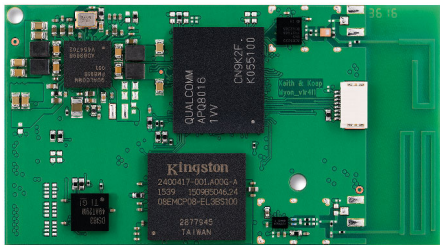


Myon I

Qualcomm® Snapdragon™ 410E CPU-Module

Keith & Koep

- Micro SOM solution for IoT/handheld devices
- Supports e.g. LVDS and MIPI displays, MIPI camera
- DirectX 12 graphics acceleration support for Windows 10 IoT Core
- The i-PAN M7 CoverLens Touchpanel Computer and the ConXM baseboard provide e.g. an Ethernet interface
- Evaluation-Kits available



Variable Features

Processor	Qualcomm® Snapdragon™ 410 Quad-core ARM Cortex A53 at up to 1.2GHz (APQ8016E), Qualcomm® Adreno™ 306 400MHz GPU
RAM Memory	1 GByte LPDDR3 -1066 (533MHz), 32Bit, 2 Gbyte on request
Flash Storage	8 Gbyte eMMC, 16 Gbyte on request
Wireless Communication	WLAN 802.11 b/g/n 2.4 GHz, Bluetooth 4.1, GPS functionality on request Options: On-board antennas or UFL-connectors

Onboard Features

Display Interfaces	MIPI (4ch) or LVDS
Interfaces	USB2.0 OTG port (USB Host or Slave), SD/SDIO Card Interface, 8 Ports configurable for different interfaces: GPIO, UART, SPI, I2C, I2S
Extension Connectors	2x 100pin Hirose DF40
Audio Codec	Stereo Headphone output, Mono Speaker 8Ω, 3 Microphone inputs
Power	PMIC to generate internal and external voltages / Lithium-ion, lithium-ion-polymer battery-charger / Coin-Cell charger

General Details

Operating Systems	Windows 10 IoT Core, Linux, Android
Voltage Supply	LiPo 3 - 4.5V / typ. 3.3V / charger 5V
Operating Temperature	-25°C to +85°C
Board Dimensions	48 x 32 x 4.2 mm without antennas / 58 x 32 x 4.2 mm with antennas (W x H x D)
Environmental Standard	RoHS, REACH, WEEE
Availability	10 years form, fit, function*
Order codes	MIPI version incl. antennas: 40 024.MI00.H00S00 LVDS version incl. antennas: 40 024.LV00.H00S00 MIPI version without antennas: 40 024.MK00.H00S00 LVDS version without antennas: 40 024.LK00.H00S00 MIPI version without WiFi/Bluetooth/GPS: 40 014.MK00.H00S00 LVDS version without WiFi/Bluetooth/GPS: 40 014.LK00.H00S00

Qualcomm® Snapdragon™ and Qualcomm® Adreno™ are products of Qualcomm Technologies, Inc. Qualcomm®, Snapdragon™ and Adreno™ are trademarks of Qualcomm Incorporated, registered in the United States and other countries. Used with permission.



www.keith-koep.com

*beginning product life circle Rev.1909
Technical modifications reserved, errors excepted

Keith & Koep GmbH
Uellendahler Str. 199
42109 Wuppertal
Tel +49-202-25253-0
Fax +49-202-25253-33