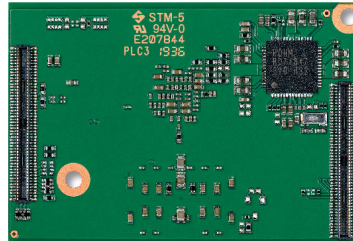
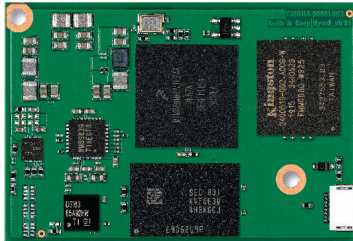


Myon II / Myon II Nano

Micro CPU-Modules with NXP i.MX 8M Mini/Nano

Keith & Koep

- NXP i.MX 8M Mini/Nano Arm Cortex A53 CPU up to 1.8/1.5 GHz, with integrated Cortex M4/M7
- LPDDR4-3200 RAM, up to 8 GByte, 32 Bit (Myon II) / up to 4 GByte, 16 Bit (Myon II Nano)
- GBit Ethernet, USB 2.0
- Supports MIPI Displays and Cameras
- LVDS Transceiver
- Low power consumption via 14nm LPC FinFET technology
- Ideal for IoT and handheld devices due to its compact dimensions
- With Linux, Android and Windows IoT Core OS available



Features

Processor	Myon II: NXP™ i.MX 8M Mini with Arm® Cortex A53 Quad-Core up to 1.8 GHz (consumer), 1.6 GHz (industrial), with integrated Cortex M4 Myon II Nano: NXP™ i.MX 8M Nano with Arm® Cortex A53 Quad-Core up to 1.5 GHz (consumer), 1.4 GHz (industrial), with integrated Cortex M7
RAM Memory	Myon II: LPDDR4-3200 up to 8 GByte, 32 Bit / Myon II Nano: LPDDR4-3200 up to 4 GByte, 16 Bit
Flash Storage	8 Bit wide eMMC 2 additional external SD cards can be connected via the SDIO interfaces
Wireless Communication	External chipsets for wireless communication can be connected via SDIO, PCIe (only Myon II) or USB interfaces
Display Interfaces	MIPI DSI (4 channel, resolution up to 1080p, 60 fps) or LVDS
Interfaces	2x USB2.0 OTG (Myon II), 1x USB2.0 OTG (Myon II Nano), PCIe (only Myon II), 2x SDIO, SPDIF In/Out, I2S, Multichannel Serial-Audio-Interface, 4x UART, I2C, SPI, QSPI, GPIOs, PWM
Ethernet	10/100MBit/1GBit RGMII interface Additional Ethernet interfaces can be implemented via PCIe and USB interfaces
Extension Connector	2x 100pin Hirose DF40
Camera Interfaces	MIPI CSI (4 channel)
Audio Codec	Stereo Headphone output, Speaker output, Stereo Line-In, Microphone inputs
Power	High-Eff. PMIC with single supply controlled by I2C
Compatibility	Pin compatible to Myon I CPU module

General Details

System Software	Linux Kernel 4.14, Android 9, Windows 10 IoT Core
Voltage Supply	+3V3 ... 5V DC
Operating Temperature	-40 ... 85°C (Industrial) / -25 ... 85°C (Extended Consumer) / 0 ... 70°C (Consumer)
Board Dimensions	48 x 32 x 4.2 mm (W x H x D)
Environmental Standard	RoHS, REACH, WEEE
Availability	10 years form, fit, function*



*beginning product life circle Rev.2003
Technical modifications reserved, errors excepted

www.keith-koep.com

Keith & Koep GmbH
Uellendahler Str. 199
42109 Wuppertal
Tel +49-202-25253-0
Fax +49-202-25253-33