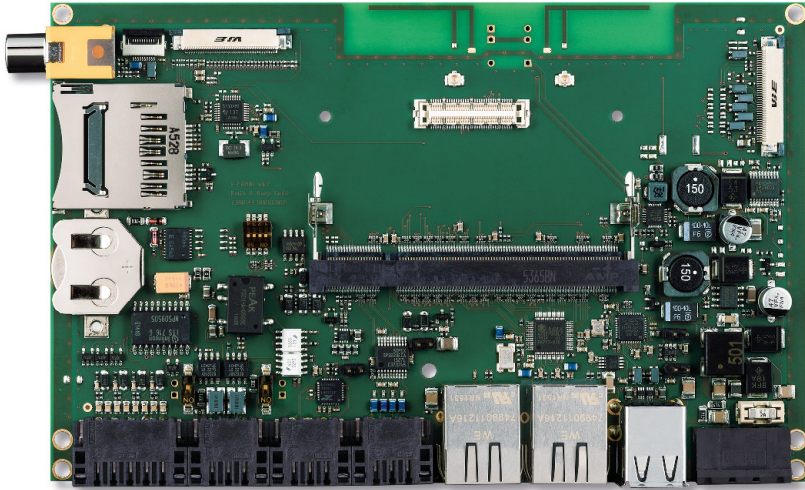


# ConXT

## Trizeps SODIMM-200 Baseboard

- Multifunctional and scalable i.MX 6 carrierboard
- Supports a wide range of interfaces, e.g. 2x Ethernet, 2x CAN, 2x USB, RS232, RS422, RS485
- Unified display interfaces like the KuK-Modis Standard simplify the integration of touchscreen LCDs
- UPS (Uninterruptible Power Supply, max. 100F) on request
- Wireless Communication via Trizeps VII onboard WiFi/Bluetooth modules (optional)

Keith & Koep



FF version

### Compatible SODIMM-200 CPU modules

Trizeps VII With NXP i.MX 6 Quad, Dual, DualLite, Solo, SoloX processors / 800 MHz – 1.0 GHz

### General features

Display Interfaces LVDS (KuK Modis Standard), Dual-LVDS (optional), 18 Bit parallel RGB display port, capacitive touch, resistive touch (optional)

Wireless Communication 2x WLAN-Bluetooth antennas / Trizeps VII option: Onboard WLAN and Bluetooth module, IEEE 802.11 a/b/g/n/e/i/h/d/k/r/w, +18 dBm, 72 Mbps (20 MHz) and up to 150 Mbps (40 MHz), Bluetooth 3.0+ EDR

### Variable features

Interfaces FF version (Full Function) USB2.0 Host, USB2.0 OTG, SD Card Socket, 2x RJ45 10/100 Mbit Ethernet, COM1 (RS232), COM2 (RS232, RS422 or RS485), 2x CAN (isolated), IOs (4x inputs 3x are ADCs, 4x outputs), analog Camera (Cinch), UPS (Uninterruptible Power Supply, max. 100F, optional), RTC with battery, 2x LED, 2,6W Audio Amplifier (pin header), Microphone (pin header)

Interfaces LC-E version (Low Cost Extended) USB2.0 Host, USB2.0 OTG, SD Card Socket, 1x RJ45 10/100 Mbit Ethernet, COM1 (RS232), COM2 (RS232, RS422 or RS485), 1x CAN (isolated), RTC with battery, 2x LED

Interfaces LC version (Low Cost) USB2.0 Host, USB2.0 OTG, SD Card Socket, 1x RJ45 10/100 Mbit Ethernet, COM1 (RS232), RTC with battery

### Expandability

FFC Connector USB, I2C, GPIOs

### General Details

System Software E-Boot, U-Boot, Barebox / Windows Embedded Compact 7, 2013 – Linux Kernel 3.035, 4.1, 4.4 – Ubuntu 14.04, 16.04, LXDE, Yocto – Android 4.2.2, 6.0

Voltage Supply +12V up to +24V industrial

Operating Temperature -20°C to +85°C

Board Dimensions 174 x 104 x 20 mm (W x H x D, FF version)

Environmental Standard RoHS, REACH, WEEE

Availability 10 years form, fit, function\*

Order codes ConXT FF: 42810.FF.000 / ConXT LC-E: 42810.LCE.000 / ConXT LC: 42810.LC.000



\*beginning product life circle Rev.1705  
Technical modifications reserved, errors excepted

www.keith-koep.com

Keith & Koep GmbH  
Uellendahler Str. 199  
42109 Wuppertal  
Tel +49-202-25253-0  
Fax +49-202-25253-33