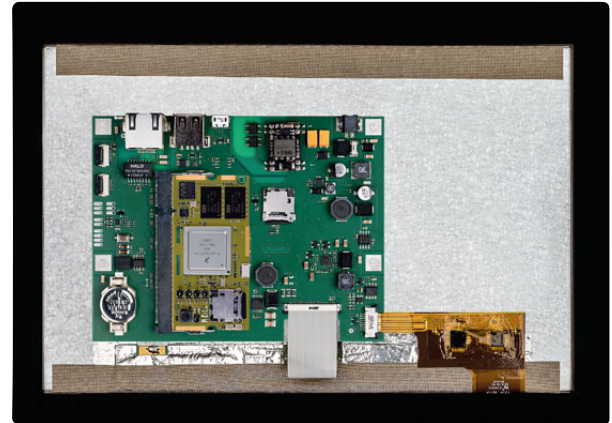
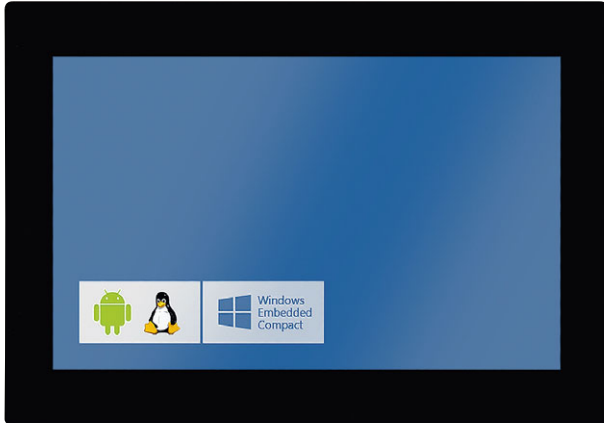


i-PAN T10 CoverLens

Modular 10.1 inch Touchpanel Computer

Keith & Koep

- Ideal basis for customer-specific solutions
- 10.1 inch projected capacitive touchscreen LCD with 3 mm glass front
- Based on Trizeps SODIMM 200 CPU module technology with NXP i.MX 6 processor
- Wireless communication via Trizeps WiFi and Bluetooth (on request)
- Extension connectors for Breakout Boards
- The components are available separately or as assembly units, housing on request



FF version

Computing Units based on Trizeps VII SOM and i-PAN T10 Baseboard

Processor	NXP i.MX 6 Quad, Dual, DualLite, Solo / 800 MHz – 1 GHz
RAM Memory	Up to 4 x 16 Bit DDR3-1066 (533MHz), 16/32/64 Bit 1 CS, 256 MByte to 1 GByte (2, 4 GByte on request)
Flash Storage	Onboard 4 Bit wide μ SD Socket (on Trizeps VII) for cards up to 32GB (standard) or onboard 8 Bit wide eMMC with 4GB up to 64GB (on request)

Features

Display	10.1 inch TFT-Display 1280 x 800 pixel, 420 cd/qm, projected capacitive touchscreen, IPS technology, 3 mm glass front
Interfaces FF version (Full Function)	USB2.0 Host, μ USB2.0 OTG, RJ45 10/100 Mbit Ethernet, μ SD Card Socket, 3,5 mm Headset Jack for Microphone and Headphone, Realtime Clock with Backup battery, LED, Powerfail Detection
Interfaces LC version (Low Cost)	USB2.0 Host, RJ45 10/100 Mbit Ethernet, Realtime Clock with Backup Cap, LED, Powerfail Detection
On request Wireless Communication	Trizeps options: Onboard WLAN and Bluetooth module, IEEE 802.11 a/b/g/n/e/i/h/d/k/r/w, +18 dBm, 72 Mbps (20 MHz) and up to 150 Mbps (40 MHz), Bluetooth 3.0+ EDR

Expandability for Breakout-Boards

Extension interfaces FF version	FFC connectors with USB, I2C, UART, CAN, Keys, Camera (Raspberry Pi) / Solderpads for SPI, Speaker (2.6 W Audio Amplifier), Headphone, Microphone
Extension interfaces LC version	FFC connector with UART / Solderpads for SPI, Headphone, Microphone

General Details

System Software	E-Boot, U-Boot, Barebox / Windows Embedded Compact 7, 2013 – Linux Kernel 3.035, 4.1, 4.4 – Ubuntu 14.04, 16.04, LXDE, Yocto – Android 4.2.2, 6.0
Voltage Supply	Industrial +12 up to 24V supply / only for FF version (optional): Power over Ethernet (POE)
Operating Temperature	-20°C to 70°C
Dimensions (W x H x D)	i-PAN T10 Baseboard: 130.0 x 110.0 x 17.0 mm / Display: 257.5 x 180.0 x 12.0 mm
Environmental Standard	RoHS, REACH, WEEE
Availability	10 years form, function*
Order Codes	i-PAN T10 CoverLens FF: 49 400.CL / i-PAN T10 CoverLens LC: 49 100.CL (incl. i-PAN T10 Baseboard FF or LC, without Trizeps VII)



*beginning product life circle
Technical modifications reserved, errors excepted

Rev.1705

www.keith-koep.com

Keith & Koep GmbH
Uellendahler Str. 199
42109 Wuppertal
Tel +49-202-25253-0
Fax +49-202-25253-33